

## ELEA● TABLE LAMP

SKU:CAMORO-201-3084.1

### WEIGHT

Net Weight: 9kg | 41.8 lbs  
Gross Weight: 15kg | 33 lbs

### BULBS

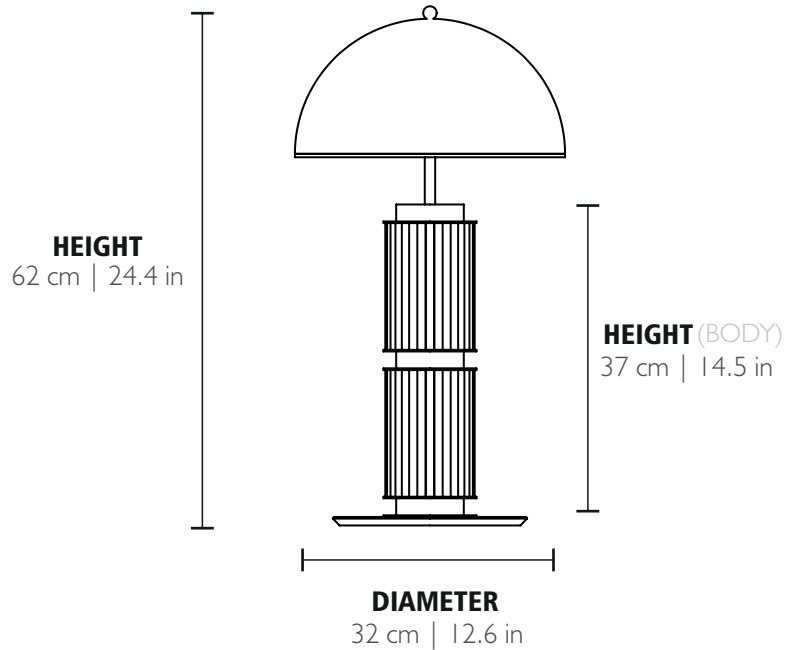
Quantity: 3  
Type: G9  
Wattage: 40W (max)

### MATERIALS

Body: Brass  
Lampshare: Aluminum

### PACKING (approx.)

Dimensions: 70 x 38 x 38 cm  
27.5 x 14.9 x 14.9 in  
Volume: 0.13 m<sup>3</sup> | 4.69 ft<sup>3</sup>



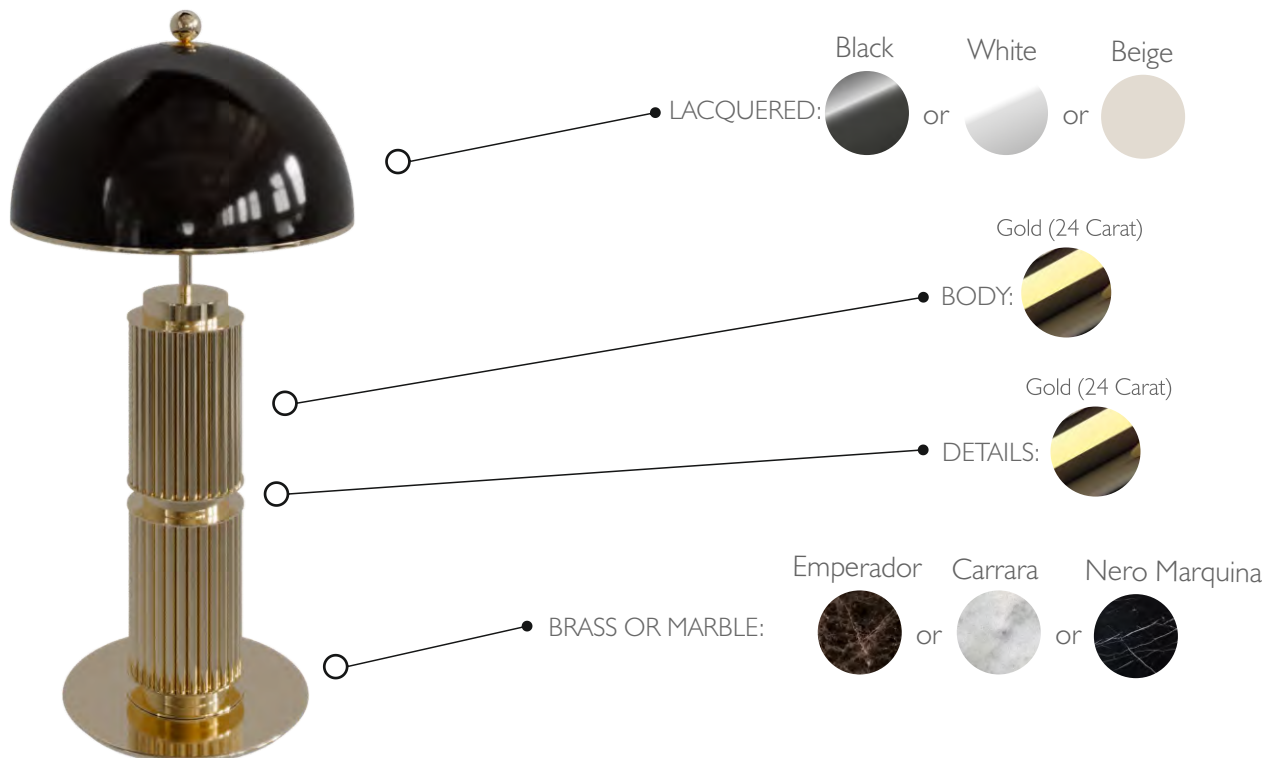
CE - Products manufactured according to the European norm of security EN 60 598-1.

F - Products adjusted for installation in surfaces normally inflammable.

□ - Products of class II. The electric isolation is double or reinforced.

ES - Products with the possibility of installation of low-energy consumption bulbs.

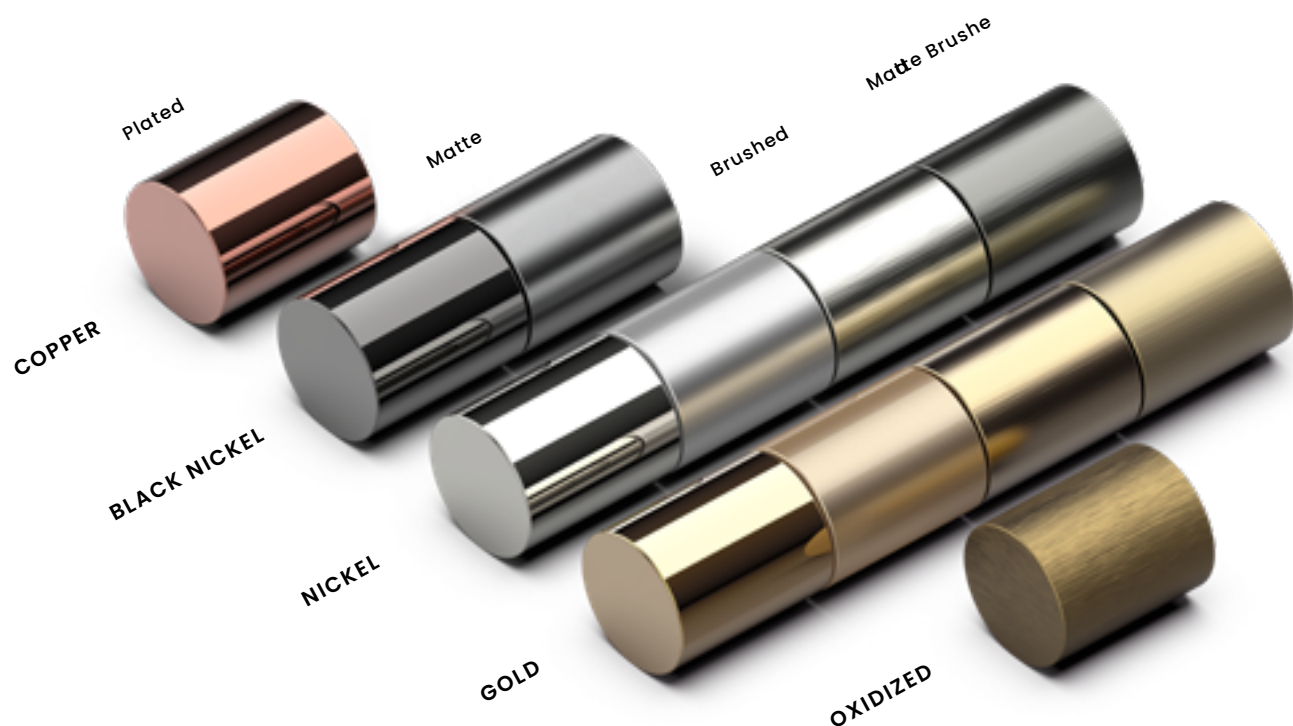
## PRODUCT FINISHES & COSTUMIZATION OPTIONS



## CUSTOMIZATION OPTIONS

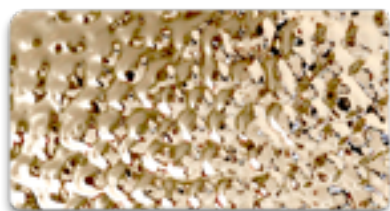
### FINISHES

#### Metal Finishes

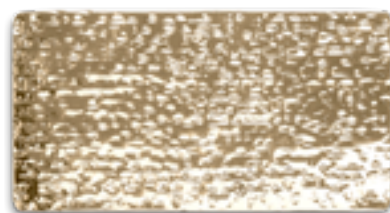


THE IMAGES USED IN THIS CATALOGUE ARE PURELY FIGURATIVE AND THE FINISHES OF THE PIECES MAY BE DIFFERENT.  
THEREFORE, WE ENCOURAGE YOU TO CHECK IT WITH YOUR BUSINESS DEVELOPMENT MANAGER.

#### Textures



Hammered

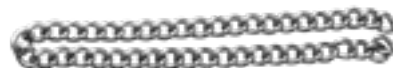


Canyon Hammered

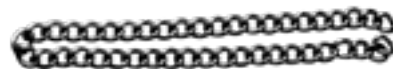
#### Chain Finishes



Gold



Nickel



Black Nickel



Copper